

# Belmont Forum

## E-INFRASTRUCTURES & DATA MANAGEMENT

Collaborative Research Action

ENVRIplus

Sanna Sorvari, Finnish Meteorological Institute

Scoping Workshop

November 28-29, 2016

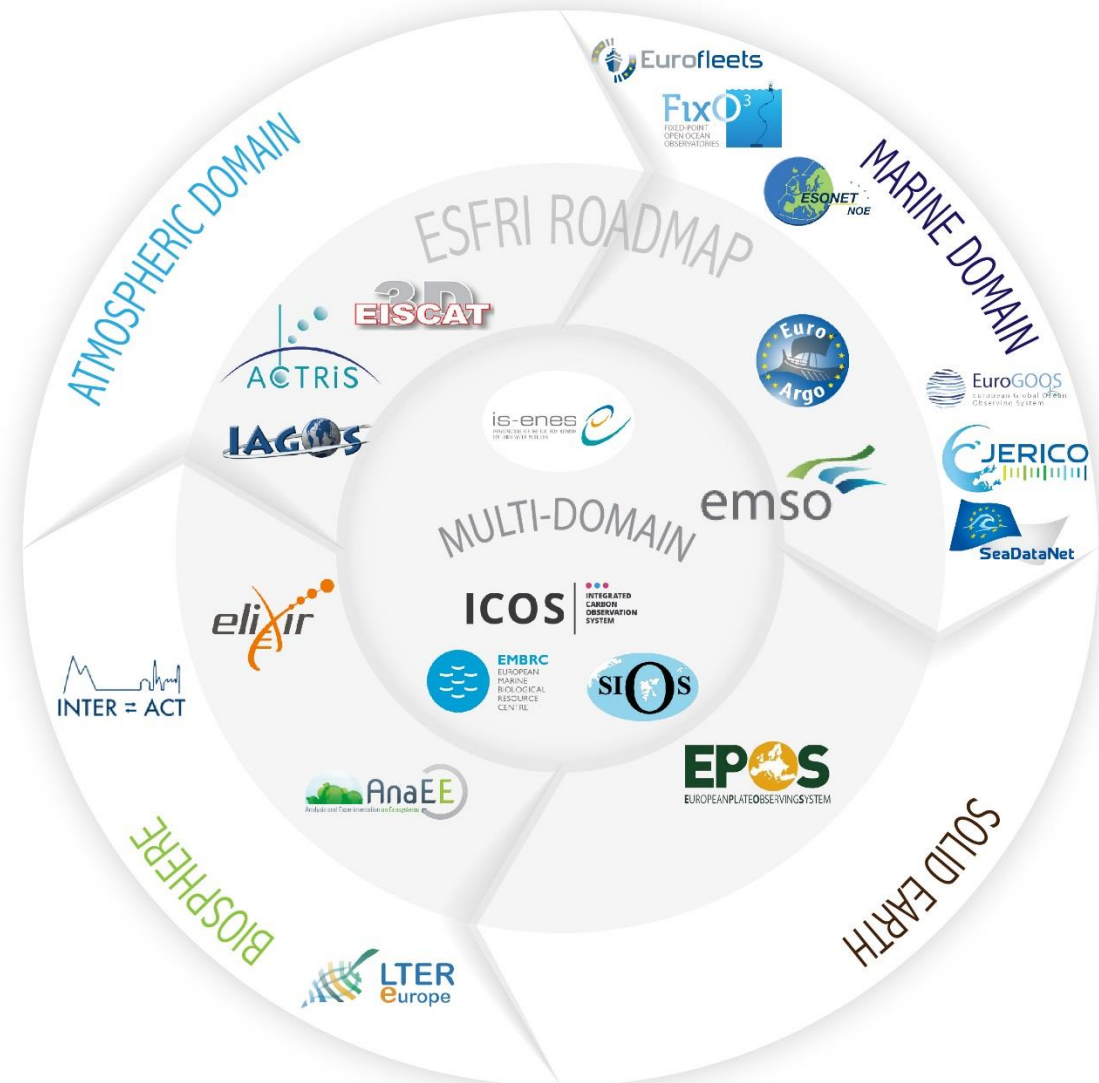
ANR, Paris



# ENVRIPLUS – EC FUNDED CLUSTER PROJECT OF ENVIRONMENTAL RESEARCH INFRASTRUCTURES

- 15 M € budget for 2015-2019
- 37 beneficiaries
- 19 Work Packages organized in 6 Themes
- 22 Research Infrastructures from 4 Environmental Domains

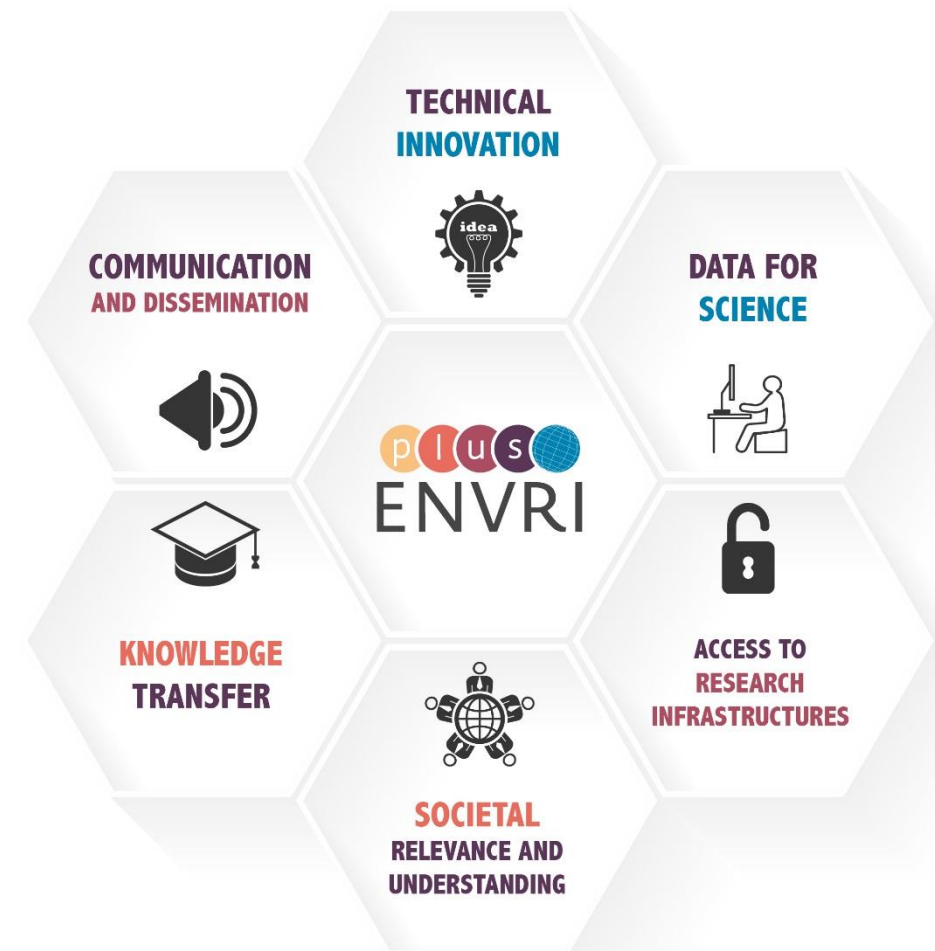
*Aim is to create more coherent, interdisciplinary and interoperable cluster of Environmental Research Infrastructures in Europe*

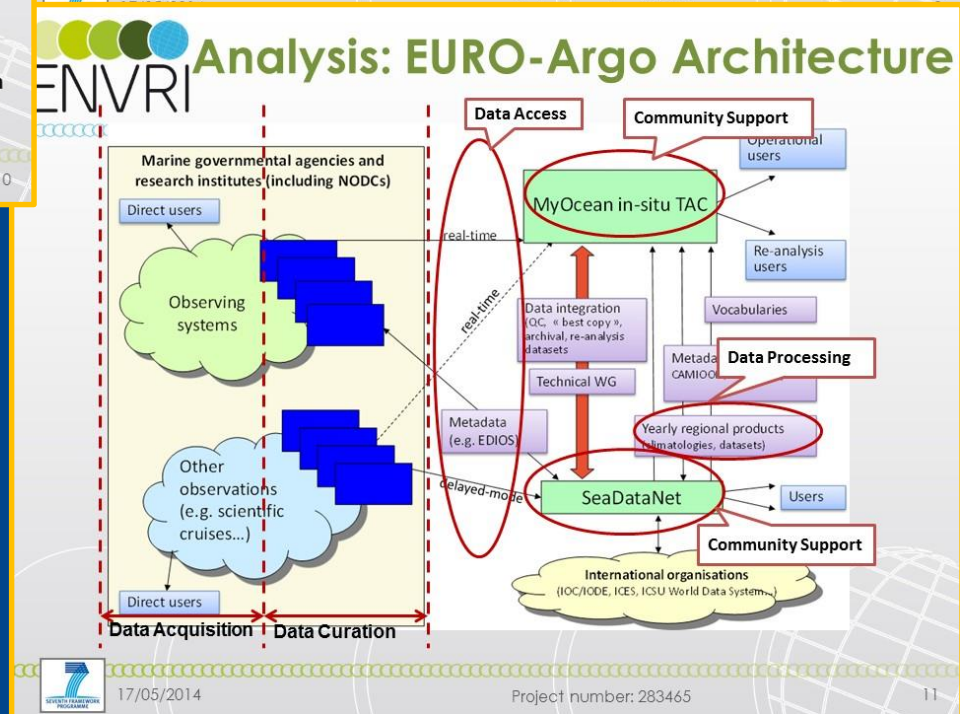
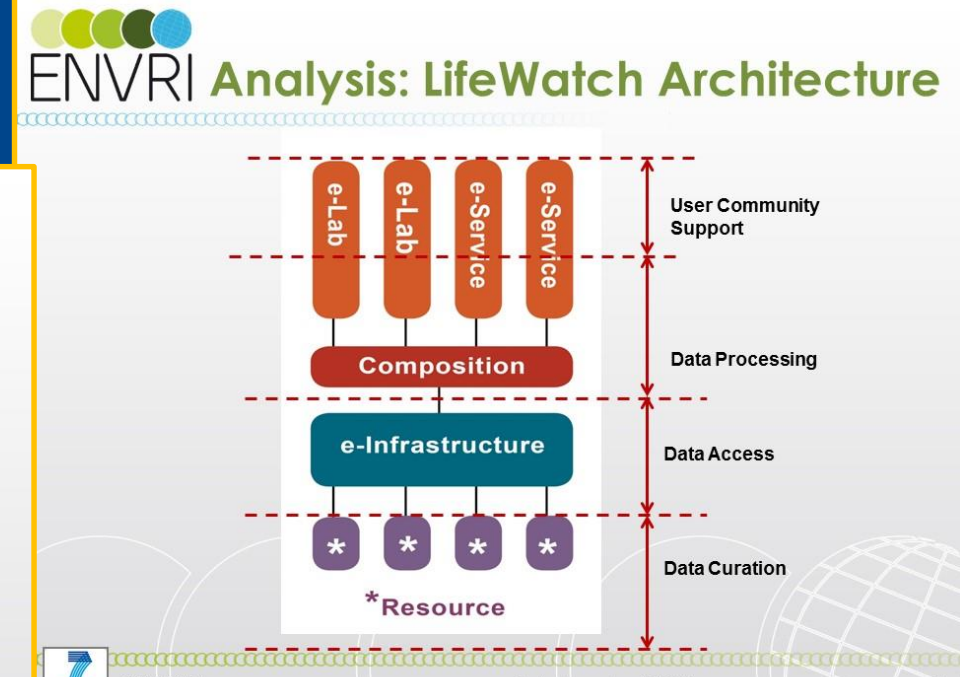
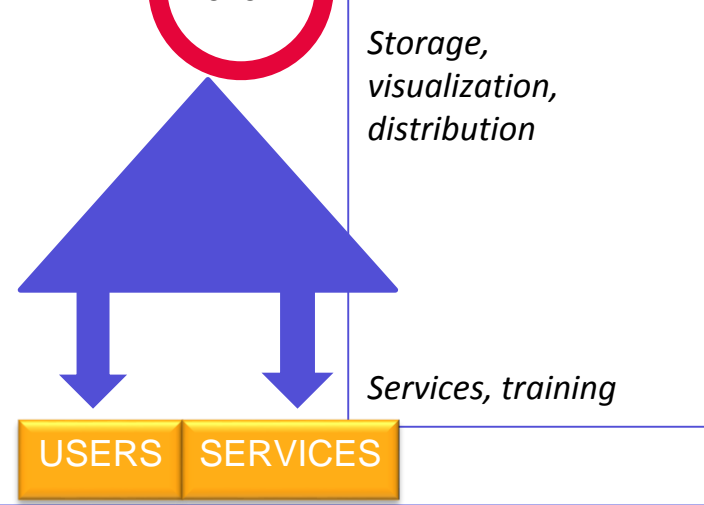
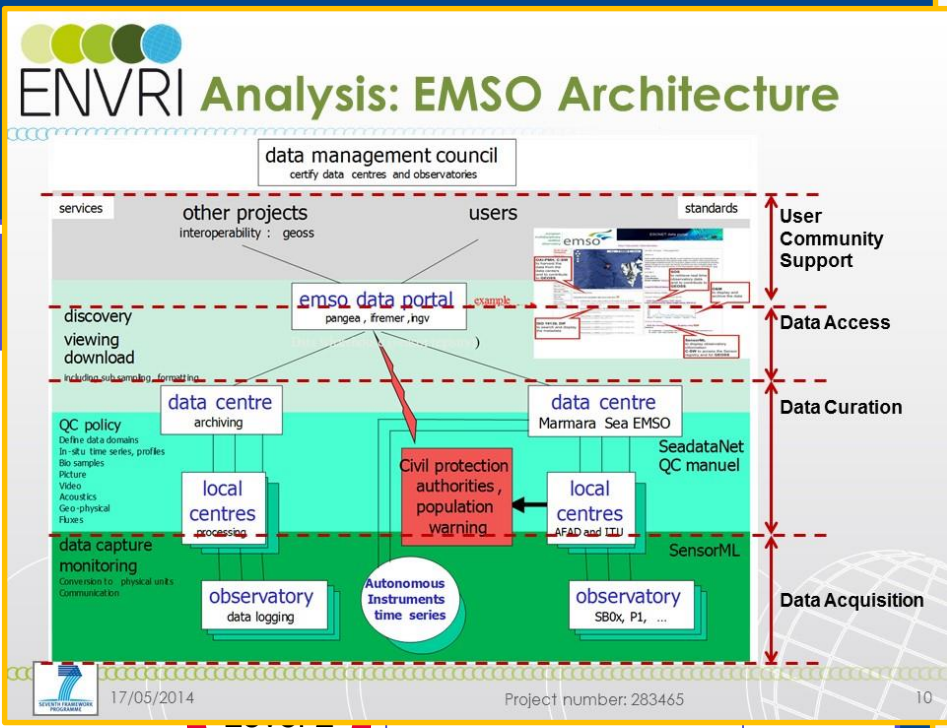
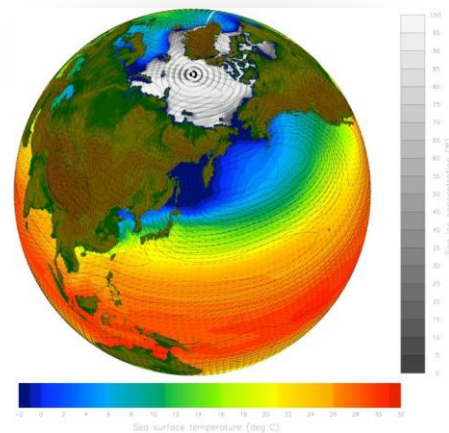


# ENVRIPLUS – EC FUNDED CLUSTER PROJECT OF ENVIRONMENTAL RESEARCH INFRASTRUCTURES

- 15 M € budget for 2015-2019
- 37 beneficiaries
- 19 Work Packages organized in 6 Themes
- 22 Research Infrastructures from 4 Environmental Domains

*Aim is to create more coherent, interdisciplinary and interoperable cluster of Environmental Research Infrastructures in Europe*

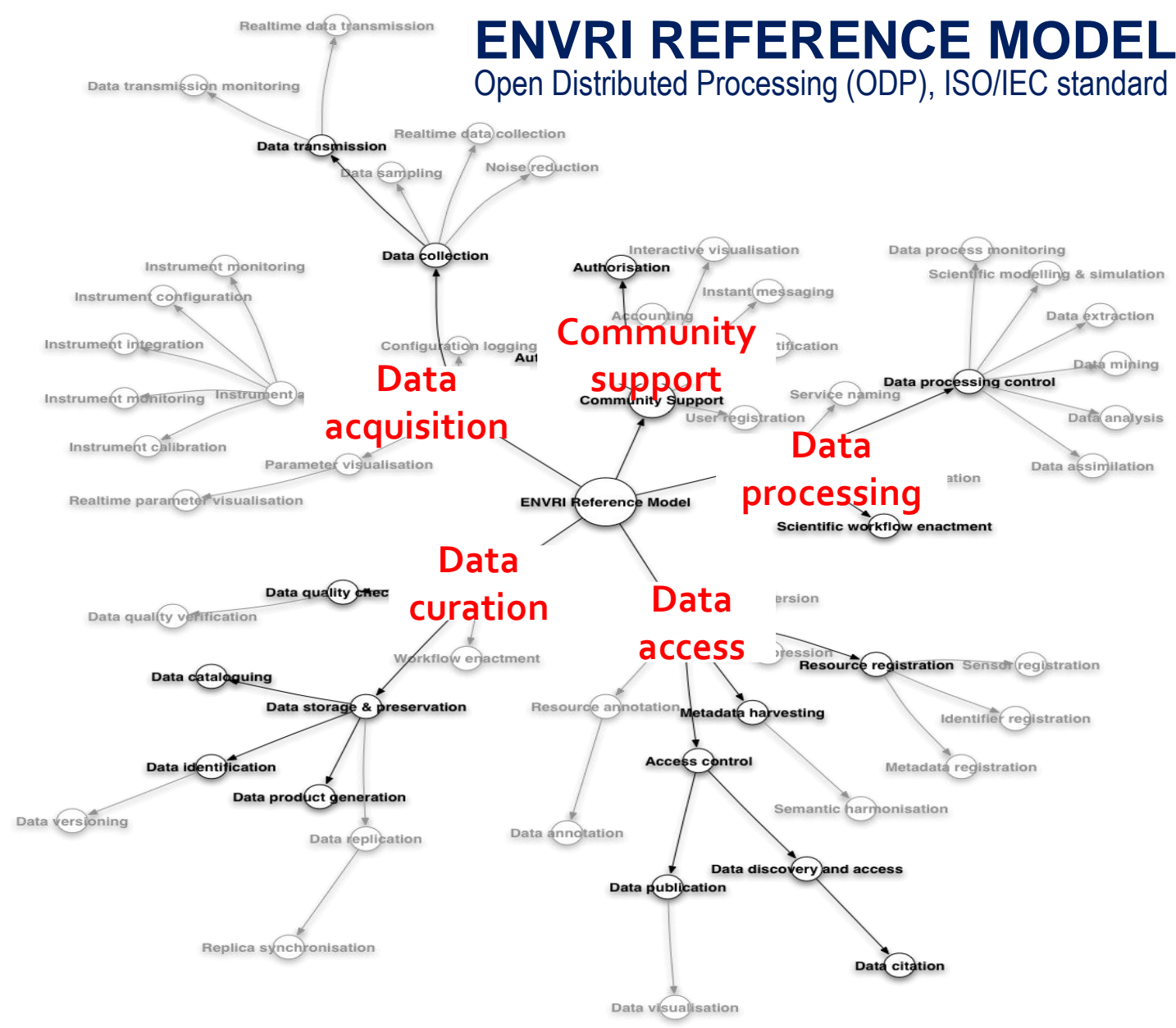






# ENVRI REFERENCE MODEL

Open Distributed Processing (ODP), ISO/IEC standard



# CHALLENGES IN ENVIRONMENTAL SCIENCES



**Quality challenge:**  
Quality control for large quantity and nearly real time sensor data

**Collaboration challenge** in documenting data processing workflows and sharing among communities.

**Identification/ Citation/ challenge**

Identifying and citing data objects, and in publishing data



**Execution challenge** in executing applications on distributed computing infrastructures

**Access challenge:**  
accessing data from different sources

**Processing challenge** in combining different data processing models



Theme2

Identification/  
Citation

Processing

Optimization

Curation

Cataloguing

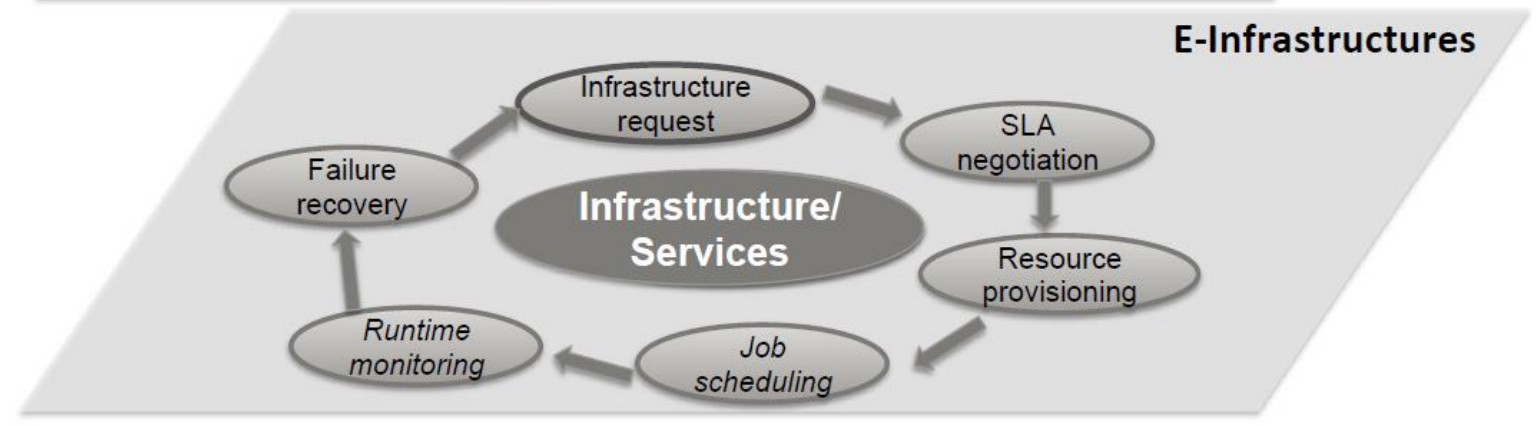
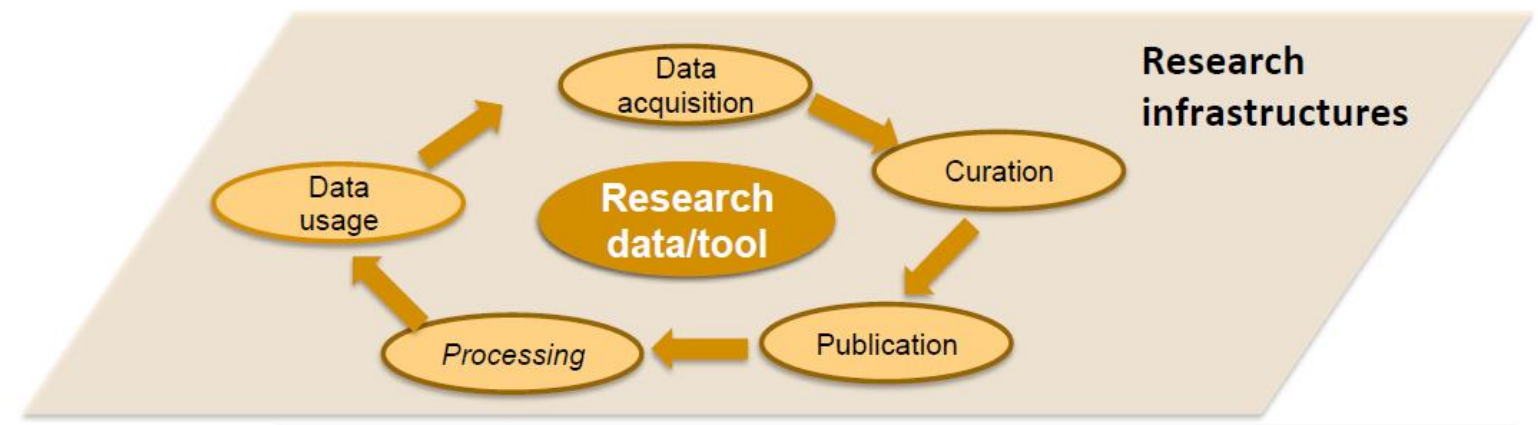
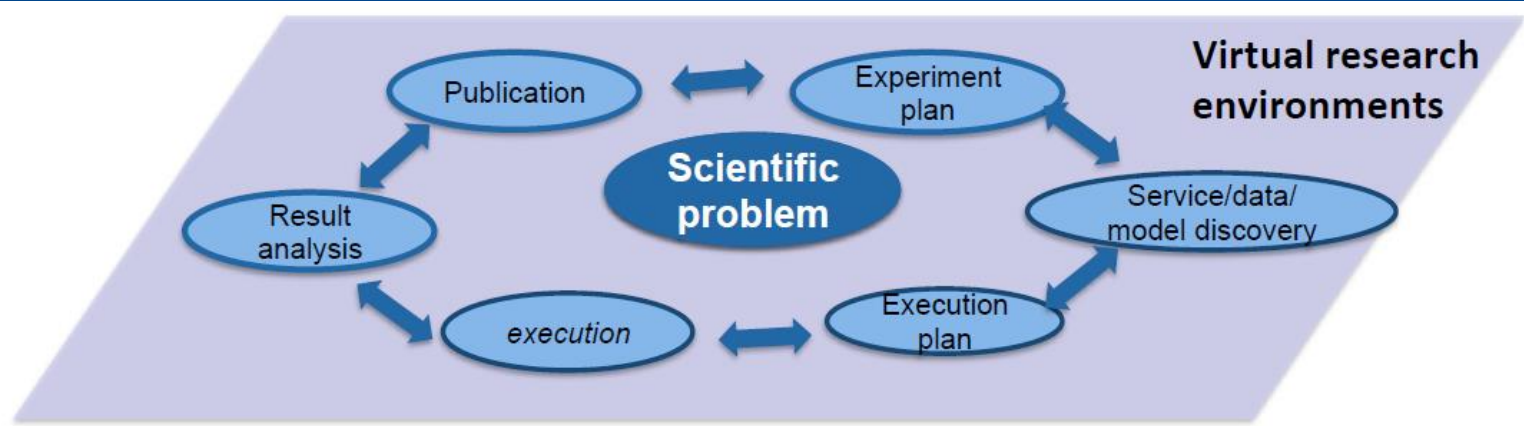
Provenance

RI development: **Architecture design**

Meta information linking: **Linking model**

Common vocabulary: **Reference model**

Storage, computing, networking and other technologies provided by underlying e-Infrastructures (**EGI, EUDAT, etc.**)





# WHAT YOUR PROJECT COULD GAIN FROM INTER-PROJECT COLLABORATION ON THESE ISSUES?

- understanding the landscape of data and service providers
- promoting of common models and framework (ENVRI Reference Model, linking models and architecture design,..)
- Enhancing the global collaboration of e-infrastructures and RIs
- Need to work internationally on several “layers”, all the layer have they own collaboration and development needs (e-infra, RIs, VREs)

