



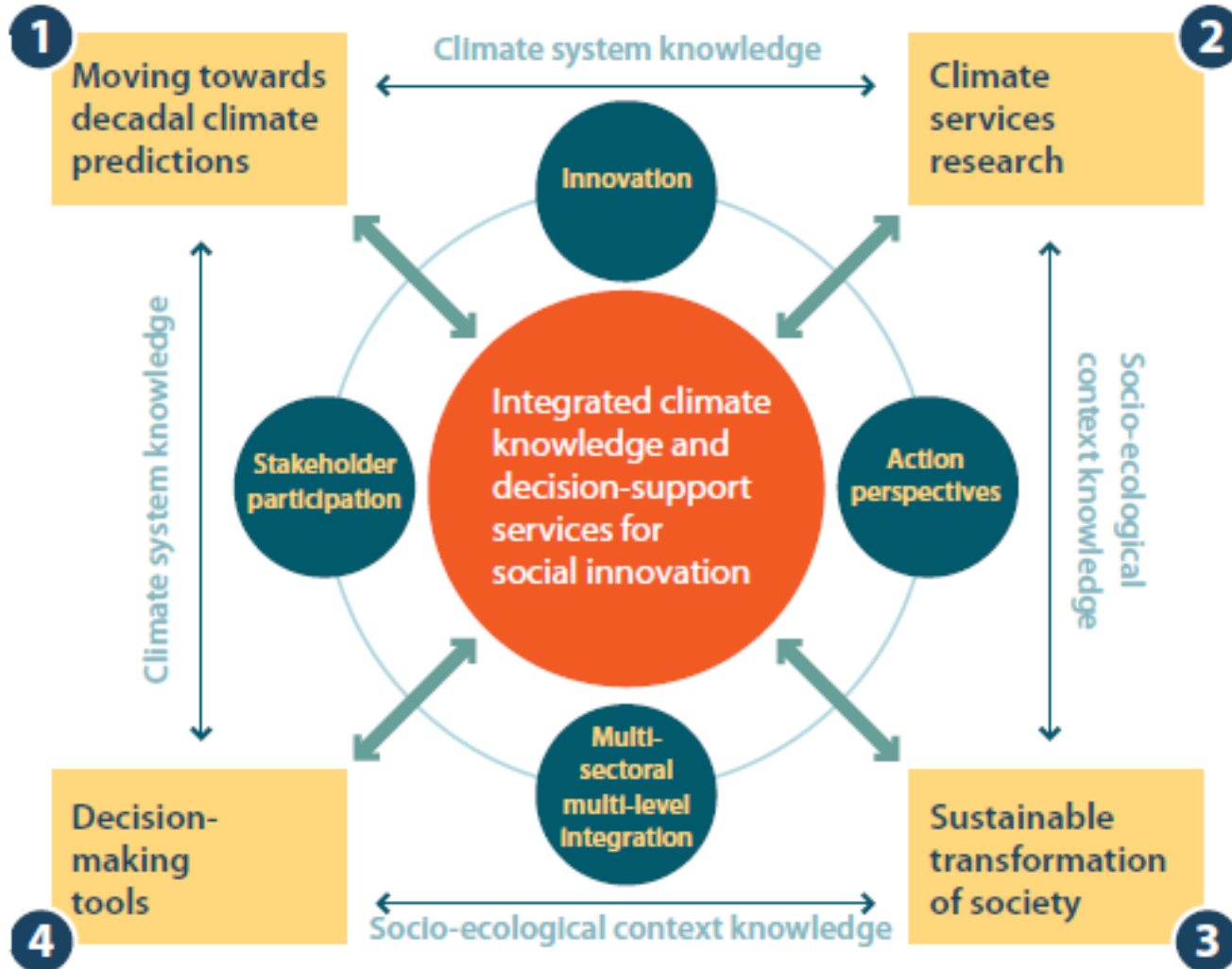
Connecting Climate Knowledge for Europe

JPI Climate

*P. Monfray, JPI Climate Chair
Brussels, October 22nd, 2015*

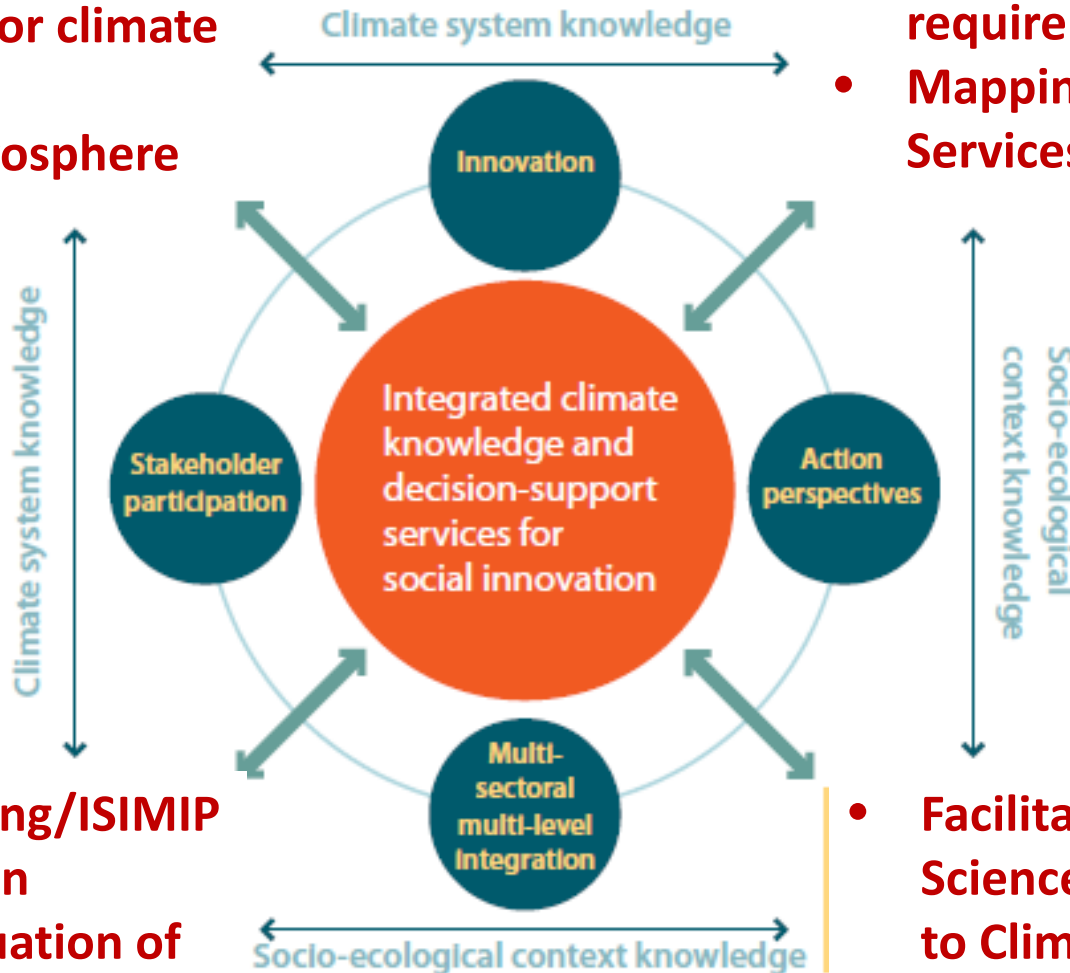


SRA 2011-2015



- Decadal prediction
- EU strategy for climate modelling
- Changing cryosphere

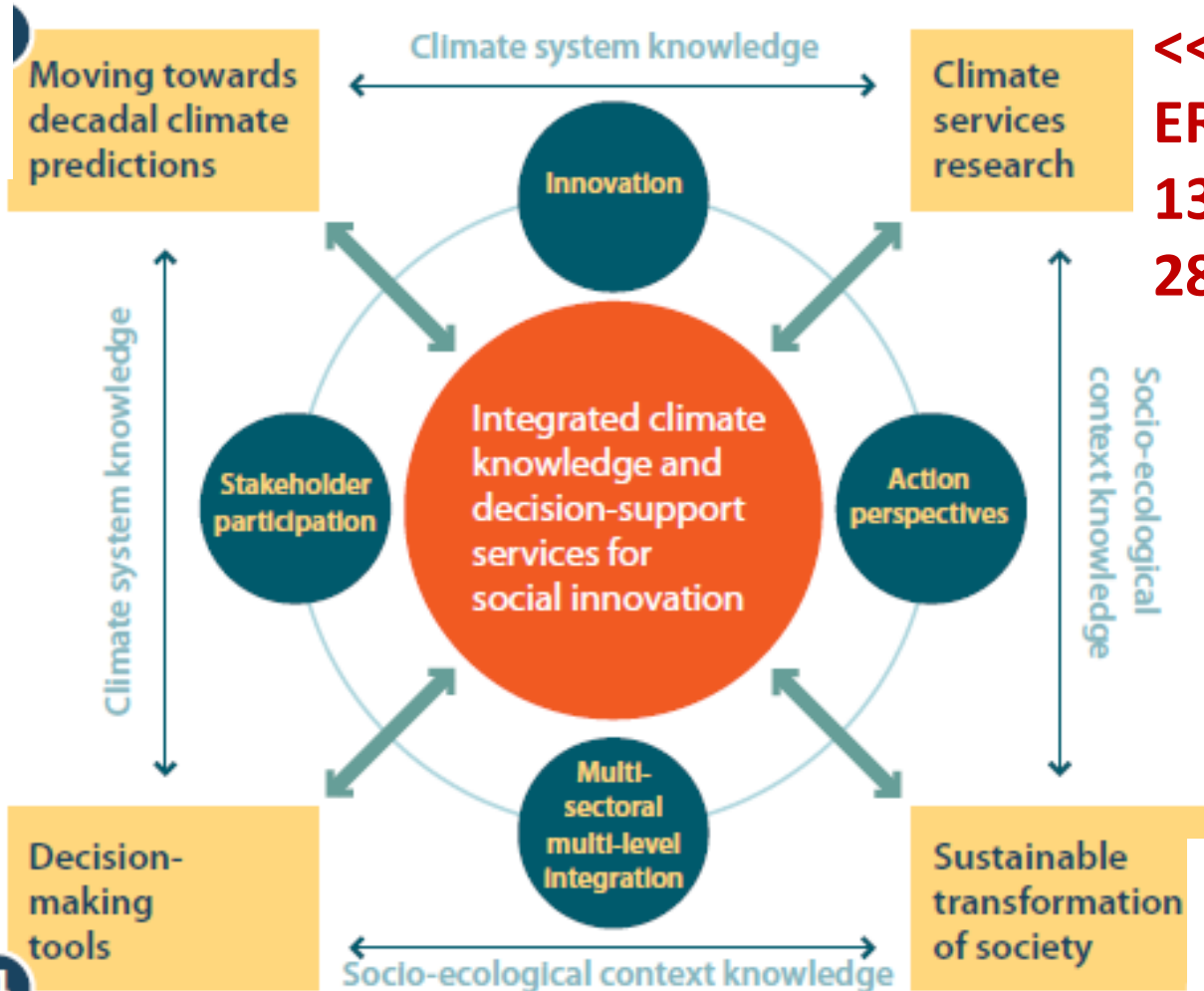
- Mapping users' requirements
- Mapping EU Climate Services Providers



- Impact modelling/ISIMIP
- GHG verification
- Economic evaluation of adaptation & mitigation

- Facilitating Social Science contributions to Climate Change Research

15M€ Call
2015 with
Belmont >



<<< 75M€
ERA4CS 2016-20
13 RFOs (cash)
28 RPOs (align)

<<< 9M€ Call
2013/14

Climate Services

Climate System Science

User Communities

Service demand

Observation & Database

HPC IT Infrastructure

Earth System Models

Socio-economic scenario models

Model simulations

- Week-Month as WGSIP, THORPEX
- Year-Decade as DCPD
- Decade-Century as CMIP
- Reanalysis as ERA-40

Climate information & knowledge

Operational production as Copernicus CCS

Climate Information Translation

- Regional Downscaling as CORDEX
- Climate Impacts models
- Socio-economic impacts models

Translation/Broker Services (incl. adaptation)

Uncertainties

Governments – International, national, local

Public / Society

Business/commercial – International, national, local

Integration & Quality Assessment/Labeling + HSS to analyze interaction & promote dialogue

H2020 SC5

2015 JPI Climate

COPERNICUS CCS

Proposed ERA4CS

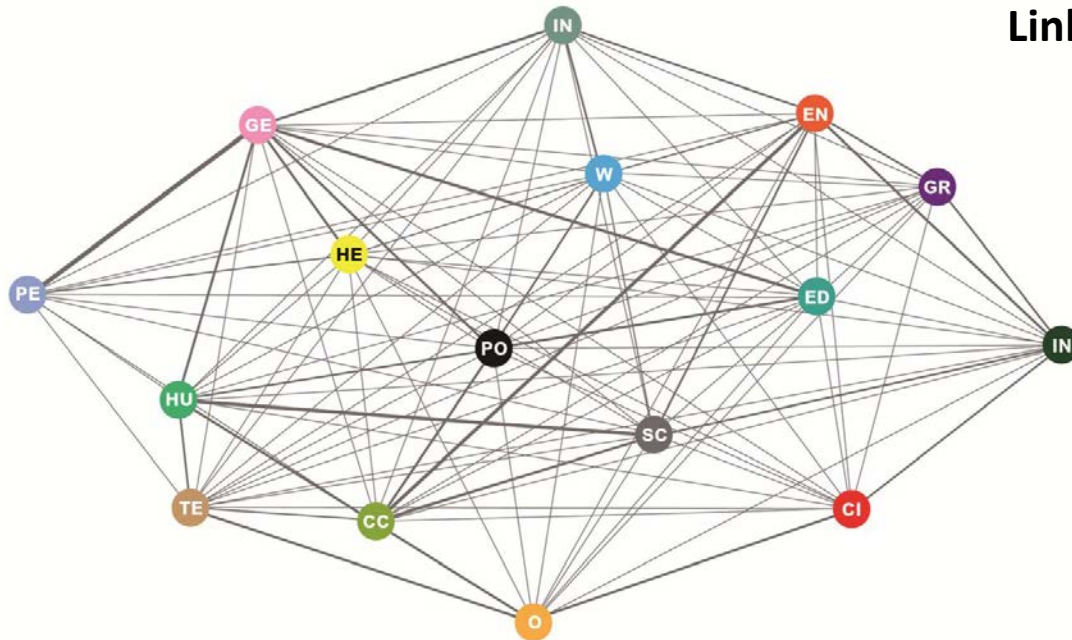
KIC Climate



Updated SRA 2016-2020



**Not approved
Don't quote!**



- | | |
|-------------------------------|--|
| CI CITIES | IN INEQUALITY |
| CC CLIMATE CHANGE | IN INFRASTRUCTURE & INDUSTRY |
| ED EDUCATION | O OCEANS |
| EN ENERGY | PE PEACEFUL & INCLUSIVE SOCIETIES |
| GE GENDER | PO POVERTY |
| GR GROWTH & EMPLOYMENT | SC SCP |
| HE HEALTH | TE TERRESTRIAL ECOSYSTEMS |
| HU HUNGER | W WATER |

Links between the 16 Sustainable Development Goals
2015 UN Global Sustainable Development Report

Services & Policies to face CC cannot be developed isolated from others SDGs

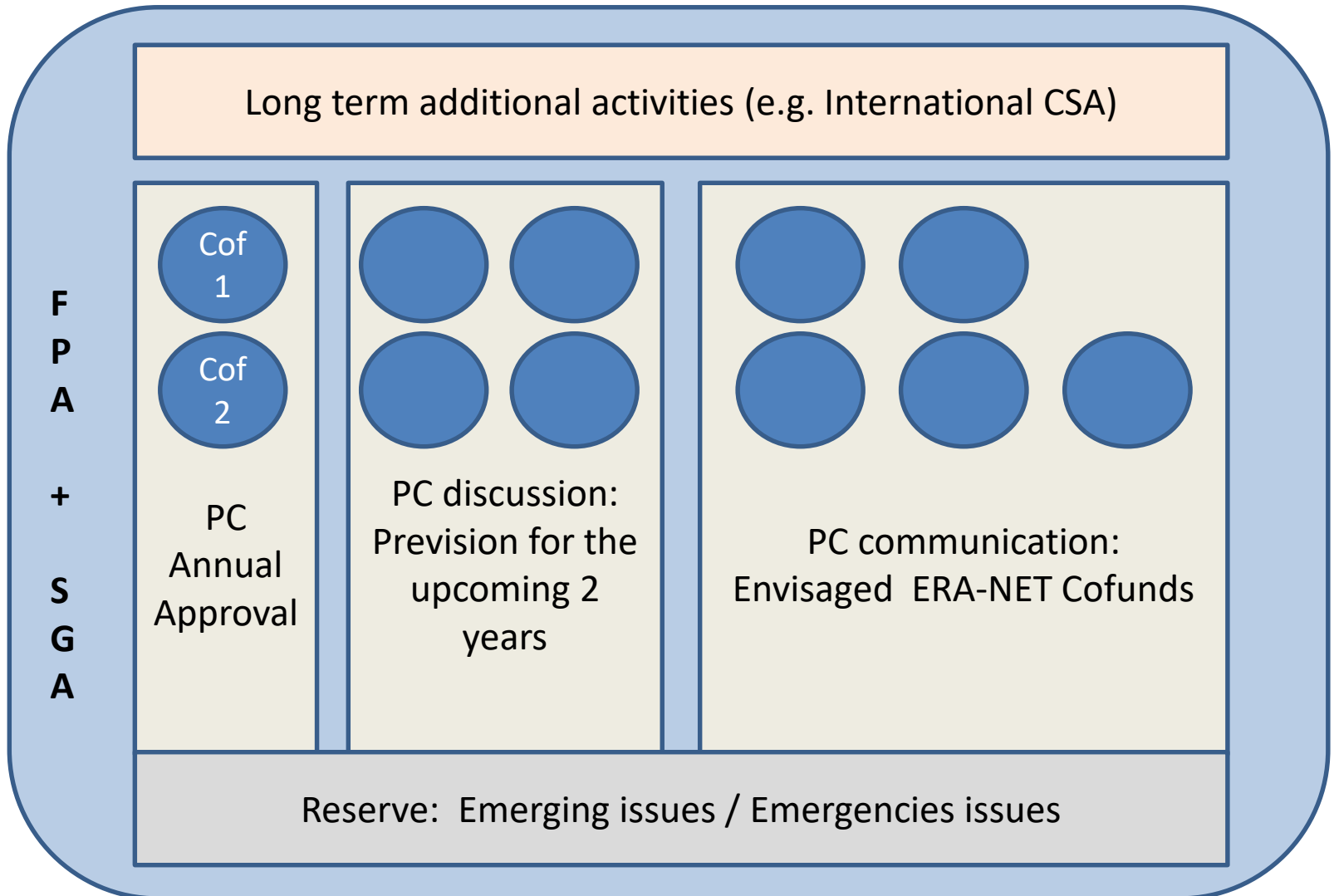
- **Overall**
 - Interaction and integration between research, policy, innovation and practice
 - Connectivity between realms of climate research, learning and innovation
 - Co-development of EU Roadmap for Climate Services
- **Tools**
 - Platform to tackle climate change into the wider demographic, environmental, social and political contexts
 - Knowledge-based information & qualified services to prevent and adapt
 - Assessment of best practices in public and private sectors
- **Actors**
 - Enhance and coordinate climate science and climate adaptation research
 - Attract humanities, economical, social and behavioral sciences
 - Engage user communities through targeted co-creation approaches
- **Cooperation**
 - Cooperate with sectorial research for climate impact and resilience
 - Bridge between national, European and international initiatives
 - International cooperation with developing and emergent countries (Africa, Latin America...)

- **CHALLENGE 1: Promoting climate change research serving decision making**

- **CHALLENGE 2: Accelerating the transition of People, Power and Progress**



- **CHALLENGE 3: Finding ways to a climate-friendly and climate-resilient Europe**



>>> SGA should be also pluri-annual but budget annually committed

- FPA rights and duties?
- FPA coordinator?
- Variable co-funded rate from 33 to 50%?
- Multi-instrumental vision (incl. CSA, R&I, Infrastructures...)?
- RPOs amendment in 2018+ ?
- 1 SGA for 2017 + 1 SGA for 2018-20?
- GPC link?
- SC2 link?
- Other tbd...



Thanks for your attention

Mapping various themes in one matrix?

TO CORRECT/ CONSOLIDATE (row solicitation towards column)	JPI Water	JPI Climate	JPI Urban	Biodiversa	
JPI Water	Africa, India, Internat. CSA Closing water cycle gaps	Water regional changes, Copernicus incl. Africa	Extreme events & risks		
JPI Climate	Soil services change?	International CSA Africa, India, Am...		Soil services change?	Global finance CC Policy assess. Transf. to sustain.
JPI Urban					
Biodiversity & resources		Biodiversity & CC: impacts and feedbacks across Europe	nature-based solutions in (peri)urban	International CSA	
SURFACE					

Not validated at all but to trigger discussion!



TO CORRECT/ CONSOLIDATE (row solicitation towards column)	JPI FACCE	JPI OCEANS	JPIs Health	Belmont Forum & others intern. Initiatives	Research infrastruct	Private sector & Innovation
JPI Water	Food security (Africa)			?		x
JPI Climate	Greenhouse Gas Verification	Ocean data acquisition and assimilation	Contributi On	SDG? SI-MIP?	Global&Regional climate modelling Bigdata access & usefulness	Inter- and trans- disciplinary Living lab for innovation Best practices assessment
JPI Urban				2016/FEW for Sust. Global Urbanization		
Biodiversa		x	Nature-based Solutions for one health	2017/Biodiversity and Ecosystem Services Scenarii for IPBES?	x	x functional and metagenomic for innovation
NORFACE				2016/Transformat ion to Sustainability		

Not validated at all but to trigger discussion!